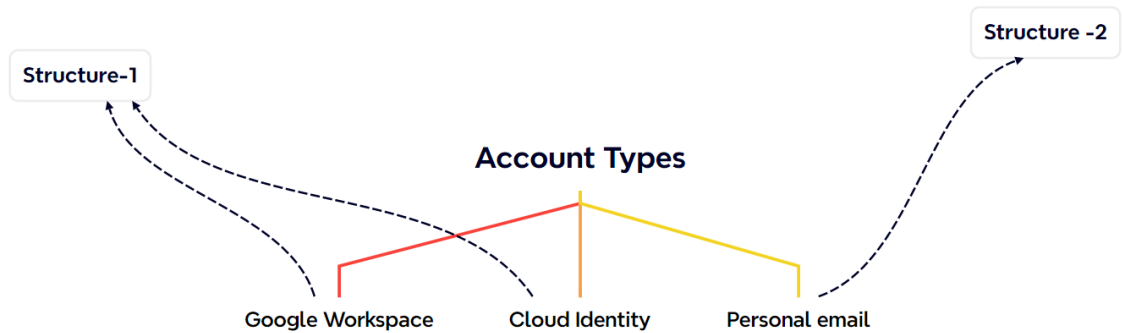
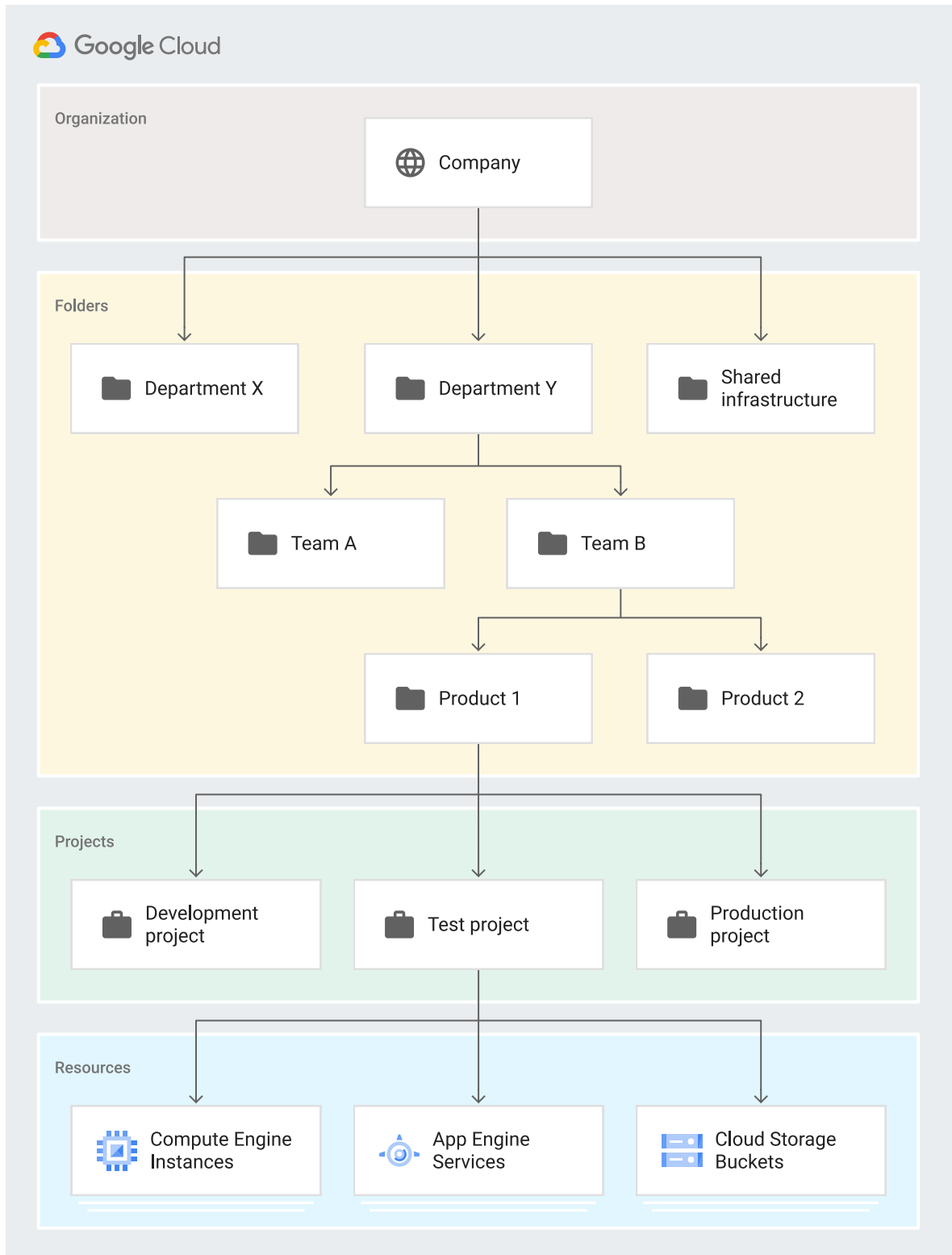


## Account Types in Google Cloud

- On a broader note we have 3 types of accounts
  - Google workspace
  - Cloud Identity
  - Individual Accounts



- Google Workspace and Identity types of accounts have the following organizational structure (Structure-1)
  1. Organization: This node is the root of the GCP resource hierarchy and represents your company (organization). This allows to centrally manage access control policies across all the GCP resources. This is automatically created with G Suite or Cloud Identity account
  2. Folders: Folders help you group related projects within your company. They can represent different departments or business units. Folders can be nested
  3. Projects: These are basic organizing units in GCP, where you create resources. Projects create isolation between resources.
  4. Resources: These are individual services such as Compute Engine instance, Cloud storage bucket, BigQuery dataset, GKE



- For individual accounts we have following structure
  1. **Projects:** These are basic organizing units in GCP, where you create resources. Projects create isolation between resources.
  2. **Resources:** These are individual services such as Compute Engine instance, Cloud storage bucket, BigQuery dataset, GKE
- Every Project in GCP gets a unique id
- [Refer Here](#) for resource hierarchy